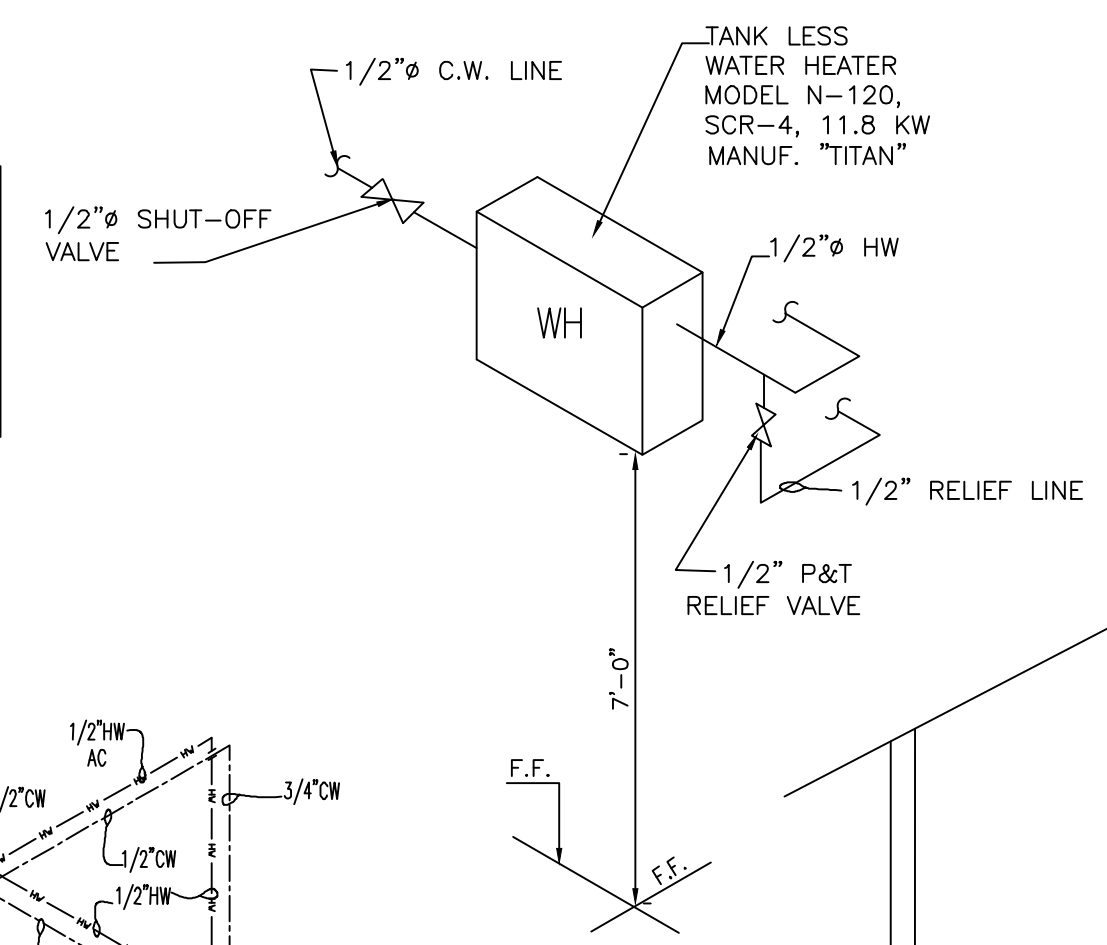


REVISIONS	
No.	

**EX. TANK LESS WH-1**  
 TANK LESS WATER HEATER  
 MODEL N-120, SCR-4  
 MANUF. "TITAN", 18 KW  
 WATER CONNECTIONS: 1/2"Ø



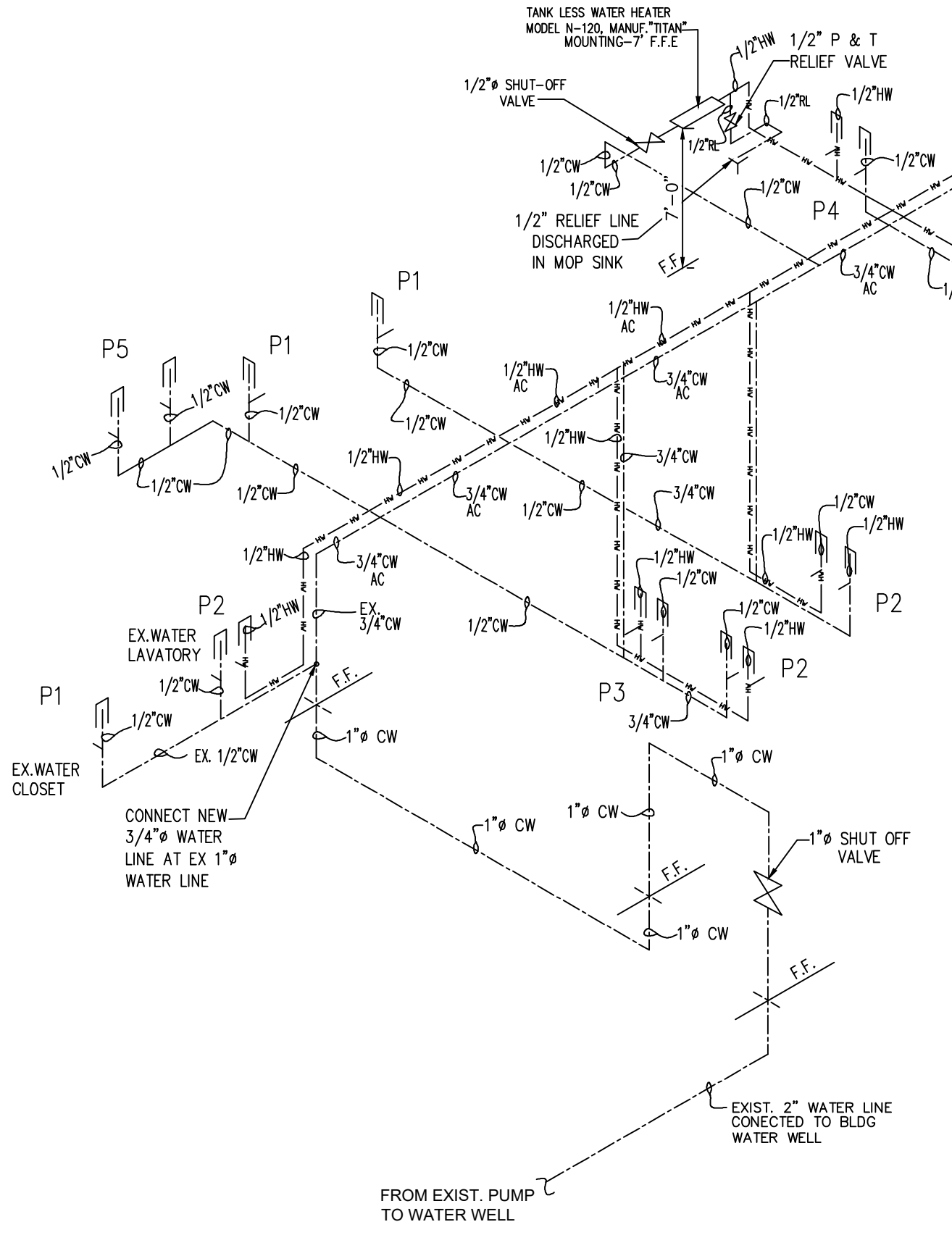
PLUMBING FIXTURE SCHEDULE						
NO.	DESCRIPTION	DRAIN	WATER		REMARKS	F.U.
			COLD	HOT		
P1	WATER CLOSET	3"	1/2"	-	NEW	4
P2	LAVATORY	1 1/2"	1/2"	1/2"	NEW	1
P3	SINK	1 1/2"	1/2"	1/2"	NEW-PROVIDE WATER HAMMER ARRESTOR	2
P4	SERVICE SINK	2"	1/2"	1/2"	NEW	2
P5	DRINKING FOUNTAIN	1 1/2"	1/2"	-	NEW-PROVIDE WATER HAMMER ARRESTOR	1

TABLE 604.3 WATER DISTRIBUTION SYSTEM DESIGN CRITERIA REQUIRED CAPACITY AT FIXTURE SUPPLY PIPE OUTLETS			
FIXTURE SUPPLY	FLOW RATE (gpm)	FLOW PRESSURE (psi)	
Sink, service	3	8	
Drinking fountain	0.75	8	
Shower	2.5	8	
Water closet, tank, close coupled	3	20	

**LEGEND**

- COLD WATER LINE (CW)
- HOT WATER LINE (HW)
- RELIEF LINE (RL)
- AC ABOVE CEILING

**NOTES:** FBC-P-607.1.2  
 TEMPERED WATER SHALL BE SUPPLIED THROUGH A WATER TEMPERATURE LIMITING DEVICE THAT CONFORMS TO ASSE 1070 AND SHALL LIMIT THE TEMPERED WATER TO MAXIMUM 110°F



**WATER LINE ISOMETRIC**  
 NTS

**WATER PLAN**  
 SCALE: 3/16"=1'-0"

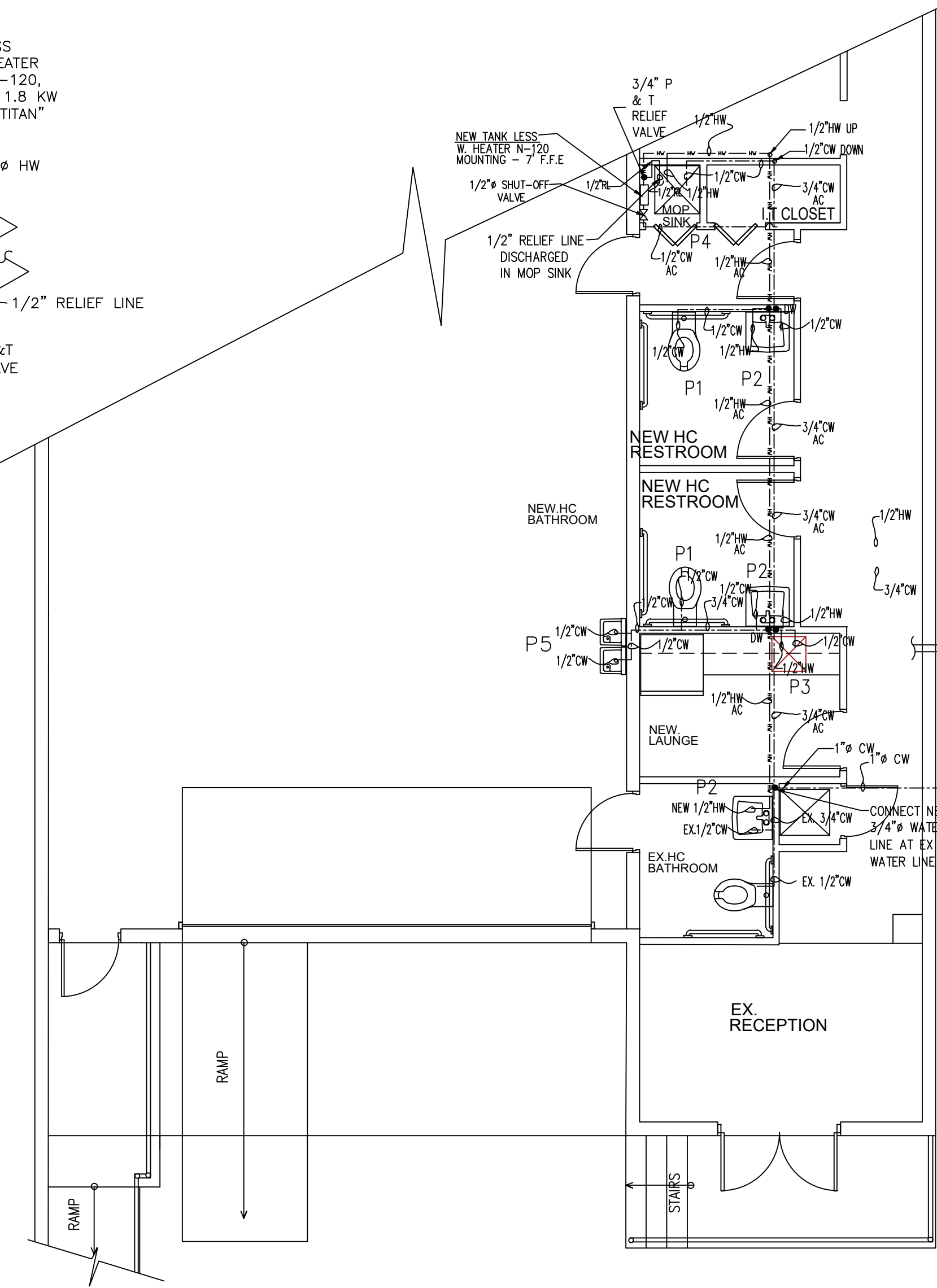
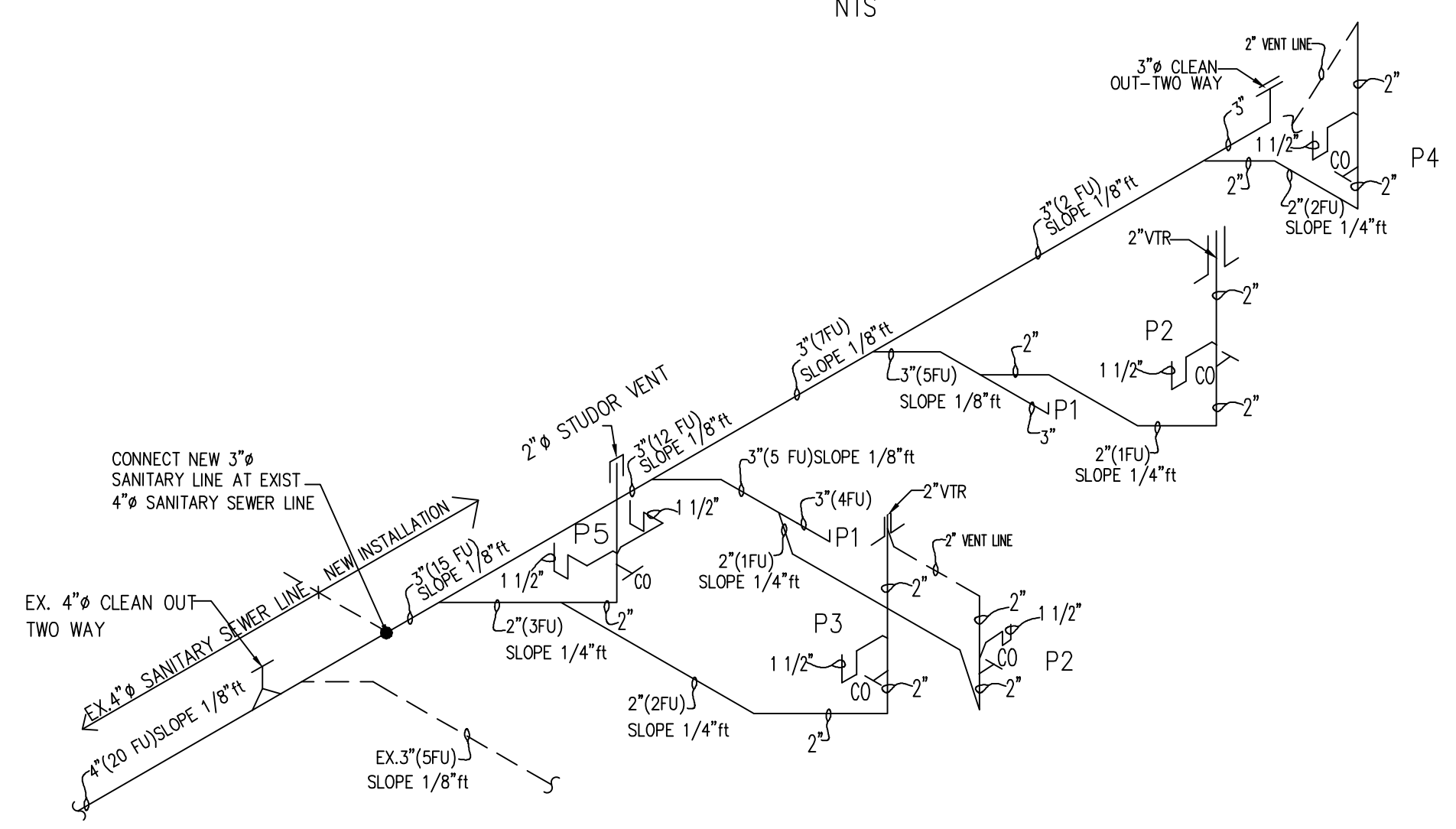


TABLE 604.4 MAXIMUM FLOW RATES AND CONSUMPTION FOR PLUMBING FIXTURES AND FIXTURE FITTINGS	
PLUMBING FIXTURE OR FIXTURE FITTING	MAX. FLOW RATE
LAVATORY FAUCET	0.5 GMP AT 60 PSI
SINK FAUCET	2.2 GMP AT 60 PSI
WATER CLOSET	1.6 GAL. PER FLUSHING CYCLE

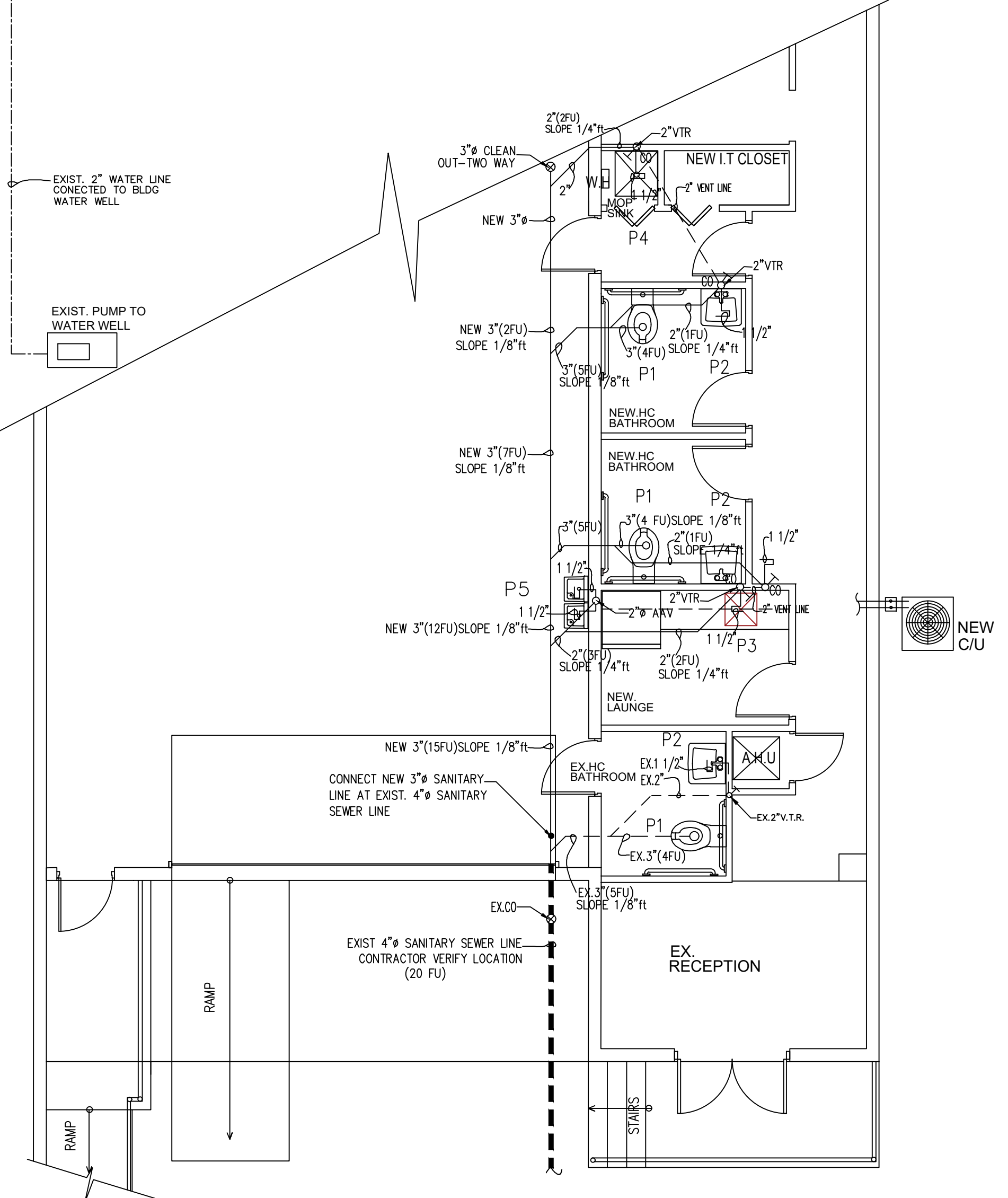
**PLUMBING SCOPE OF WORK**

- NEW PLUMBING CONNECTION TO NEW RESTROOM
- NEW PLUMBING CONNECTION TO NEW SINK ON KITCHEN
- NEW PLUMBING CONNECTION TO NEW MOP SINK
- NEW PLUMBING CONNECTION TO DRINKING FOUNTAIN
- INSTALL NEW ELECTR. WATER HEATER TITAN N-120

MEP WORKS DOES NOT COMPROMISE STRUCTURAL SYSTEM.



**SANITARY ISOMETRIC**  
 NTS



**SANITARY PLAN**  
 SCALE: 3/16"=1'-0"

THESE DRAWING & SPECIFICATIONS ARE INSTRUMENTS OF SERVICE AND SHALL REMAIN THE PROPERTY OF ROSARIO MONTERO WHETHER THE PROJECT FOR WHICH THEY WERE PREPARED IS EXECUTED OR NOT. THEY ARE NOT TO BE USED IN ANY MANNER ON OTHER PROJECTS OR EXTENSIONS TO THIS PROJECT EXCEPT BY AGREEMENT IN WRITING AND WITH THE APPROPRIATE COMPENSATION TO ROSARIO MONTERO & ASSOCIATES

**Project Information:**  
**INTERIOR RENOVATIONS FOR EXISTING WAREHOUSE**

**OWNER INFORMATION:**  
 VALPART ENTERPRISES LLC  
 DORAL, FL 33172

**PROJECT ADDRESS:**  
 10200 NW 25TH ST UNIT 113  
 DORAL, FL 33172

This item has been digitally signed and sealed by ROSARIO MONTERO, PE, on 05/05/2024. Printed copies of this document are not considered signed and the signature must be verified on any electronic copies.

**ROSARIO MONTERO**  
 PROFESSIONAL ENGINEER, P.E.

FL REGISTRATION No. 78464  
 9581 FONTAINEBLUE BVLID  
 MIAMI, FLORIDA 33172  
 PHONE: (786) 294-8305

DATE: 07.22.2024  
 DRAWN BY: R.G.  
 CHECKED BY: R.M.  
 SCALE: AS SHOW