

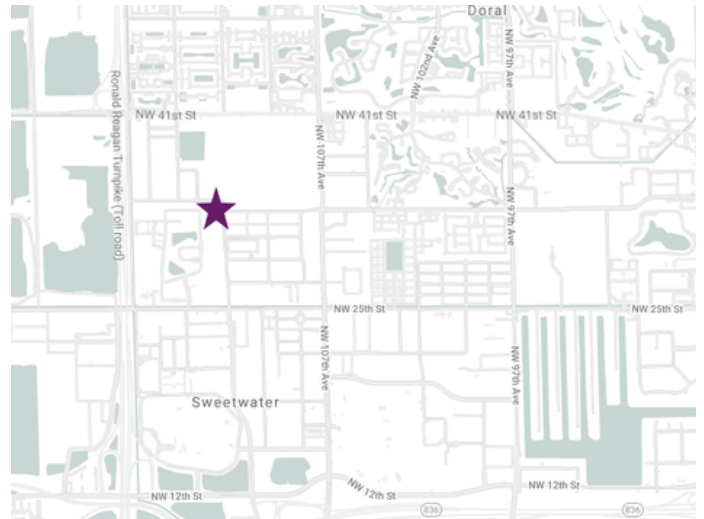
SAKHIL CENTER AT DORAL CONDO OFFICE AVAILABLE FOR LEASE

3300 NW 112 AVENUE, UNIT #13, DORAL, FL 33172 | +/- 200-1000 SF



PROPERTY HIGHLIGHTS

- ~ 200-1,000 SF OFFICE SPACES AVAILABLE
- OFFICE SPACE ON 1ST FLOOR
- PRIVATE OFFICES
- CONFERENCE AREA
- LARGE BULLPEN AREA
- CLOSE PROXIMITY TO FL TURNPIKE & DOLPHIN EXPY



LEASE RATE:
\$25.00PSF

FULL SERVICE (NET OF JANITORIAL)
PLUS FL SALES TAX



Reshma Parvani, SIOR
Broker
305-342-9576
rparvani@parvanigroup.com

Vishal Parvani, SIOR
Associate
786-205-5579
vparvani@parvanigroup.com

NOTE: This offering subject to errors, omissions, prior sale or withdrawal.

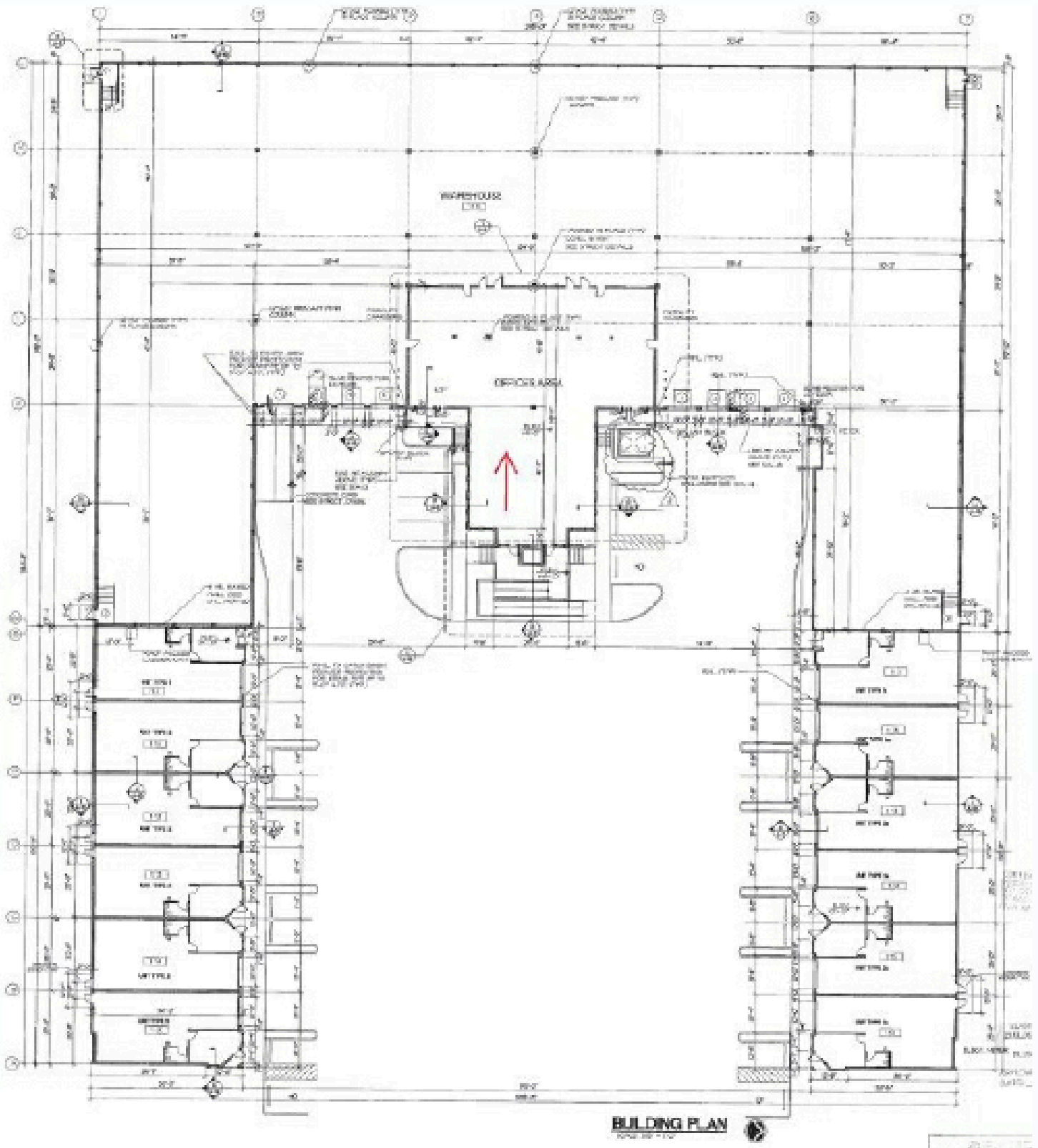
PHOTOS



Reshma Parvani, SIOR
Broker
305-342-9576
rparvani@parvanigroup.com

Vishal Parvani, SIOR
Associate
786-205-5579
vparvani@parvanigroup.com

PLANS



Reshma Parvani, SIOR
Broker
305-342-9576
rparvani@parvanigroup.com

Vishal Parvani, SIOR
Associate
786-205-5579
vparvani@parvanigroup.com