

WAREHOUSE SPACE

AVAILABLE FOR SUBLEASE



10133 USA TODAY WAY, MIRAMAR, FL 33025 | ~ 19,252 SF

PROPERTY HIGHLIGHTS

~ 19,252 SF TOTAL

4 DOCK HIGH DOORS

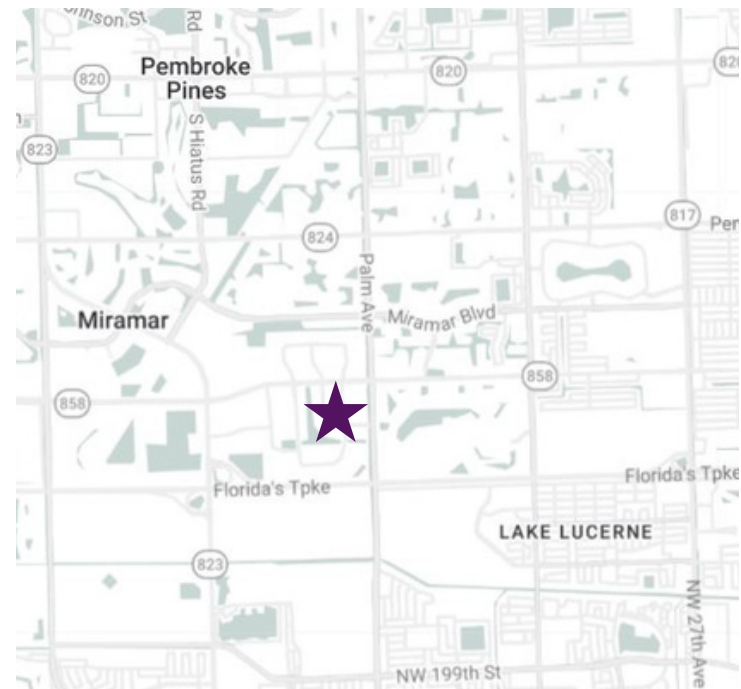
6 PRIVATE OFFICES

AMPLE PARKING

24' CEILING HEIGHT

CLOSE PROXIMITY TO FL TURNPIKE

SUBLEASE THRU 9/30/27



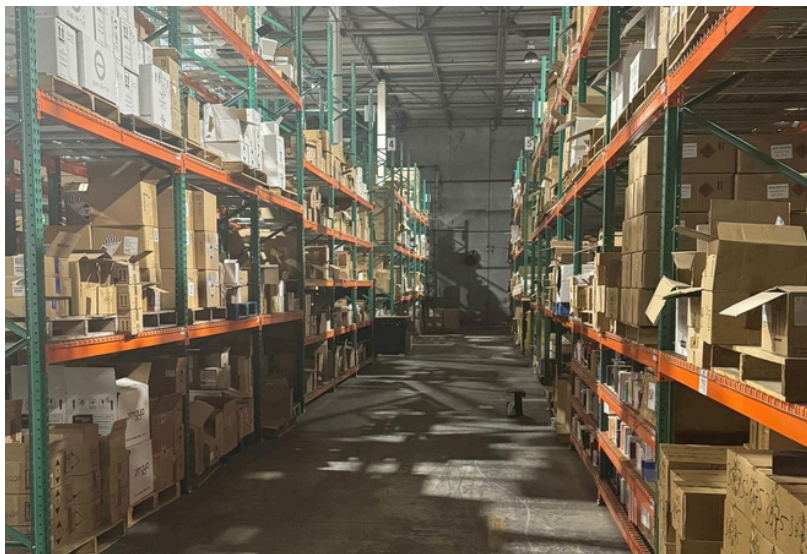
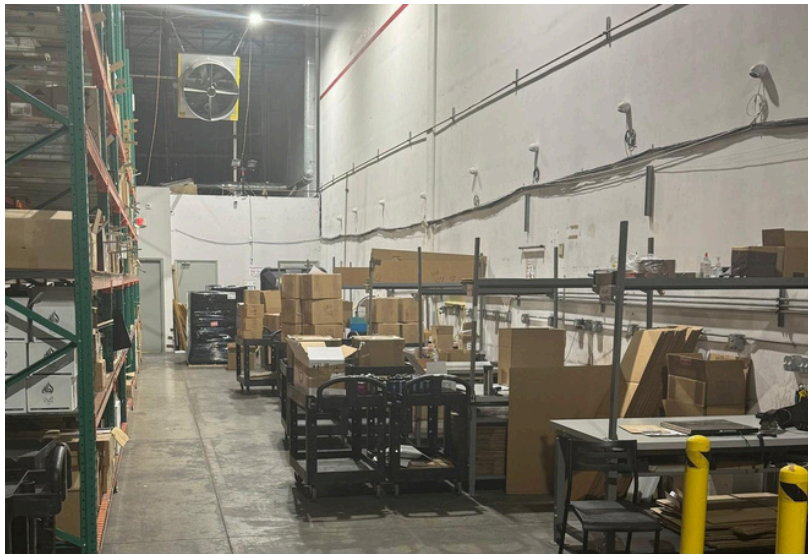
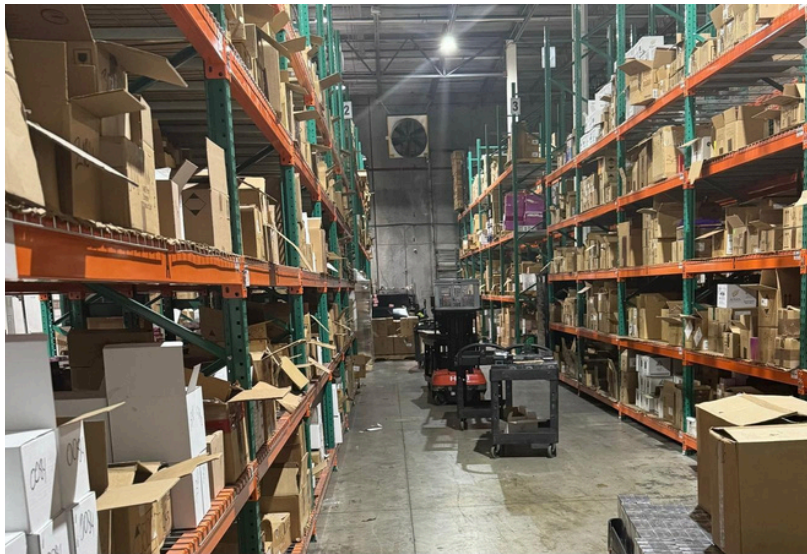
**SUBLEASE RATE:
\$18.00 PSF GROSS**



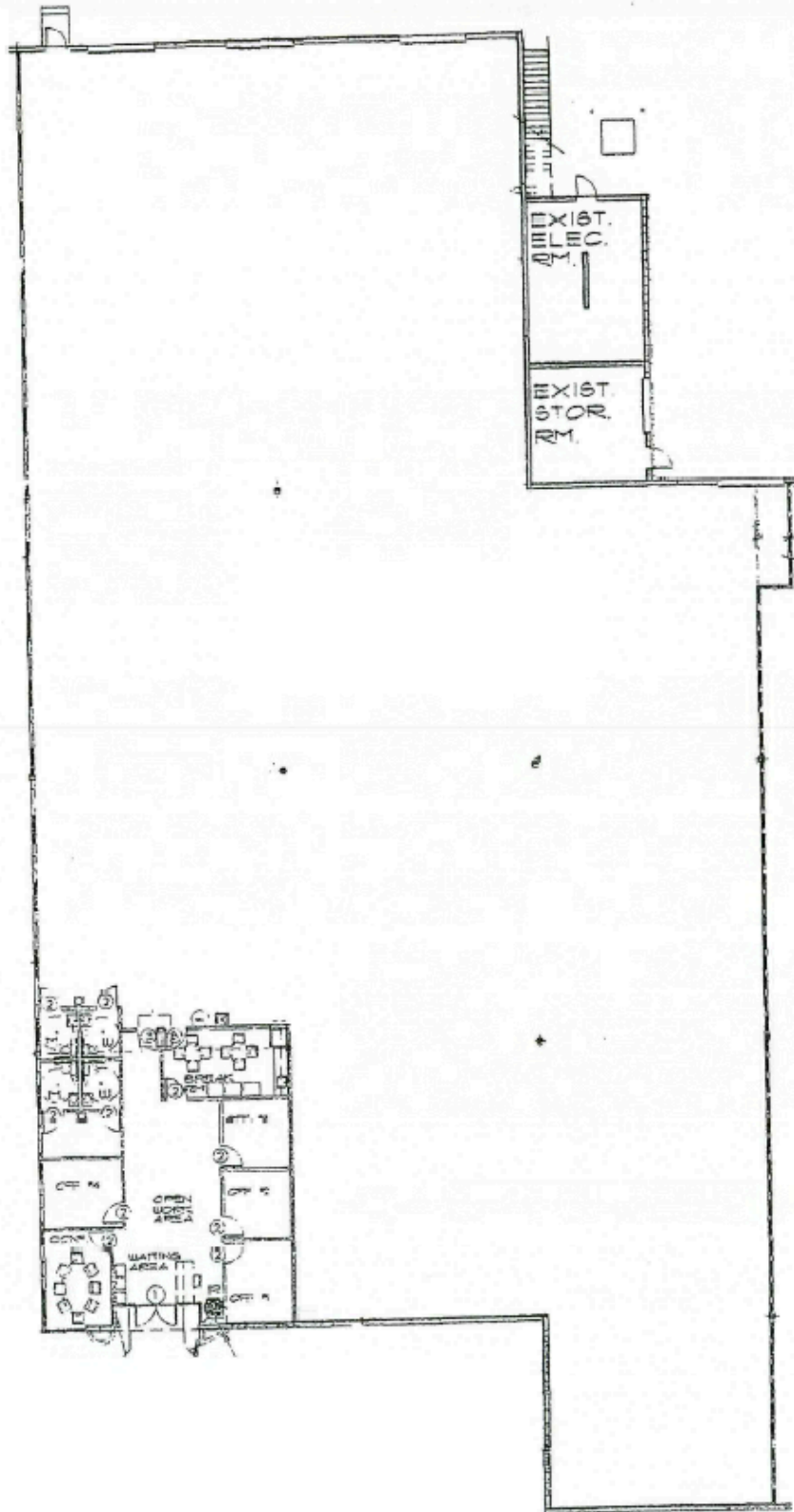
Reshma Parvani, SIOR
Broker
305-342-9576
rparvani@parvanigroup.com

Vishal Parvani, SIOR
Associate
786-205-5579
vparvani@parvanigroup.com

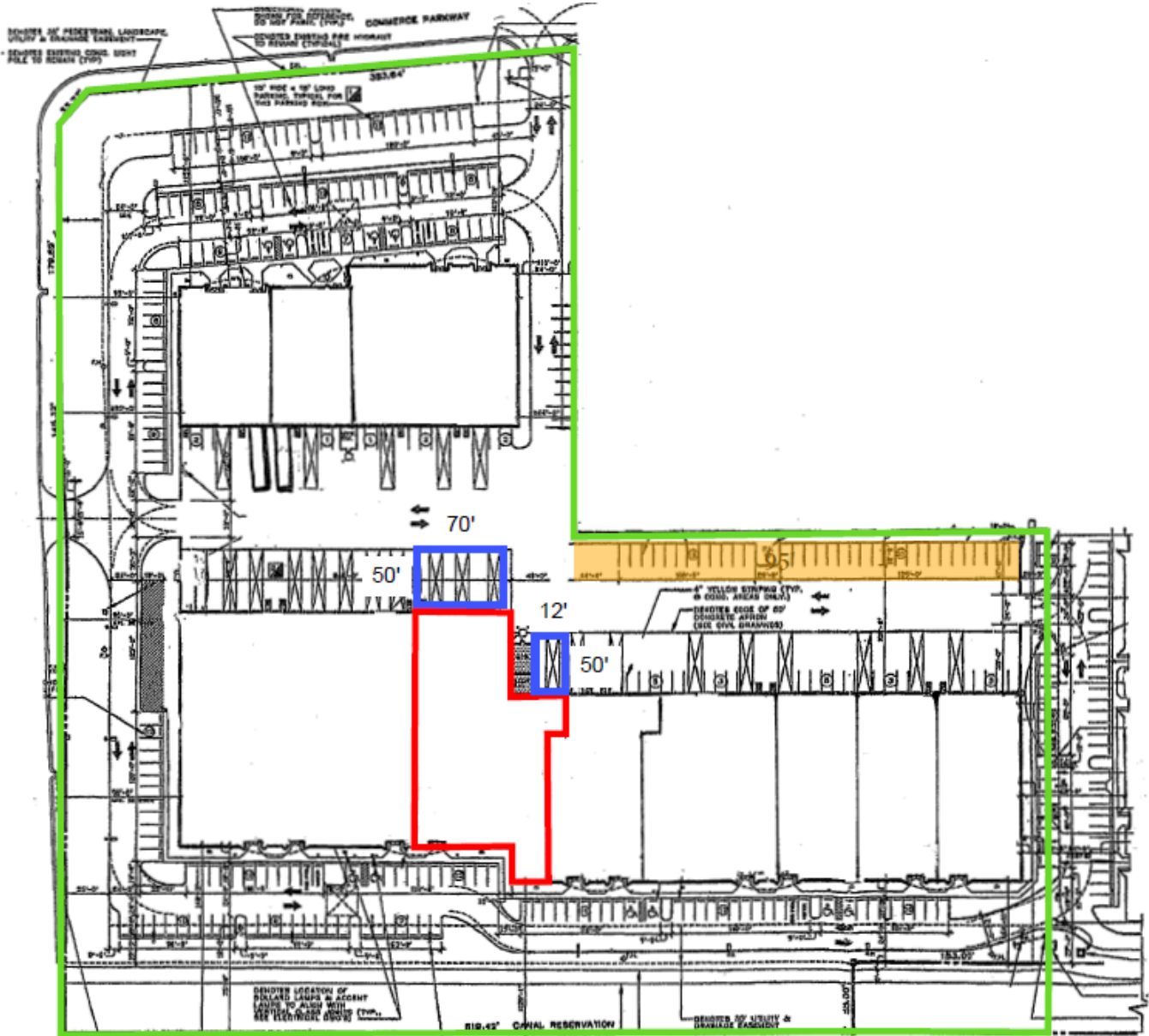
PHOTOS



FLOOR PLAN



SITE PLAN



- The "Building"
- The "Premises"
- The "Truckyard"
- No Parking Area

Exhibit A
Page 2 of 3

